

Mission: Develop a comprehensive system of care in collaboration with youth and families that is responsive and informed about trauma to better address the unique needs of children and youth with severe emotional challenges and their families.

Vision: All Children and Families are part of communities and service networks that provide safety, trust, empowerment, choice, and opportunities for collaboration.



What are our strengths and needs?

Goals

How will this be done?

What will success look like?

Who will be served?

Children and youth with serious emotional challenges & their families in Androscoggin, Franklin, & Oxford Counties:
 •Ages Birth-12 (years 1-3); followed by ages Birth-20 (years 4-6)
 •Primary focus for year two will be children & families coming into contact with Child Welfare.

What are the strengths and needs of our Service Systems?

Issues/Needs

- Difficulties accessing services: wait list, eligibility, limited services, funding
- Training & Awareness of Trauma
- Workforce recruitment, retention, and diversity
- Better coordination of services, reduce paperwork, universal tools
- Inclusion of Family & Youth

Strengths

- TCMHS is a leader in Trauma Informed System Change
- Strong support from the Department of Health & Human Services and the Governor's Children's Cabinet
- Strong involvement of existing Family Organizations
- Service Providers in the community are supportive of the initiative
- Many services are currently available in Maine

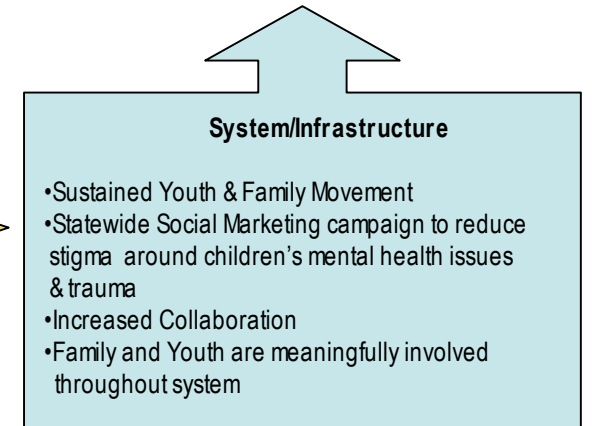
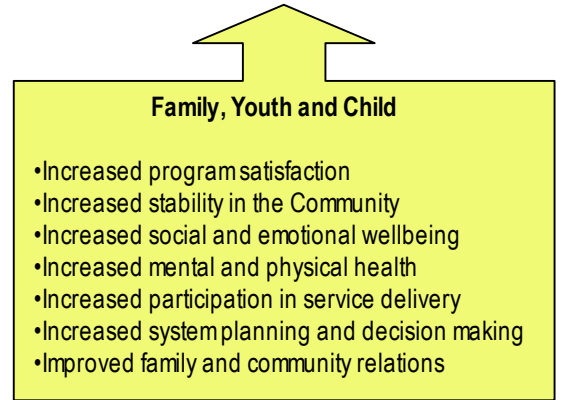
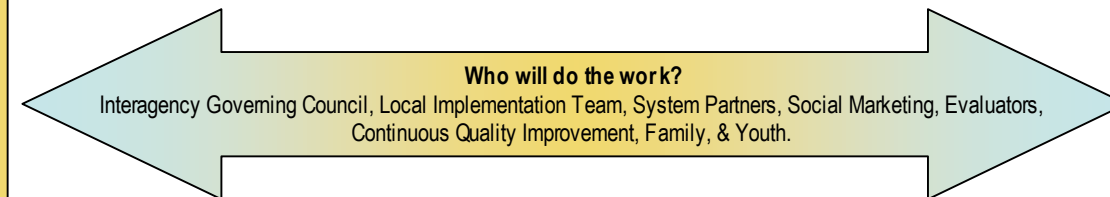
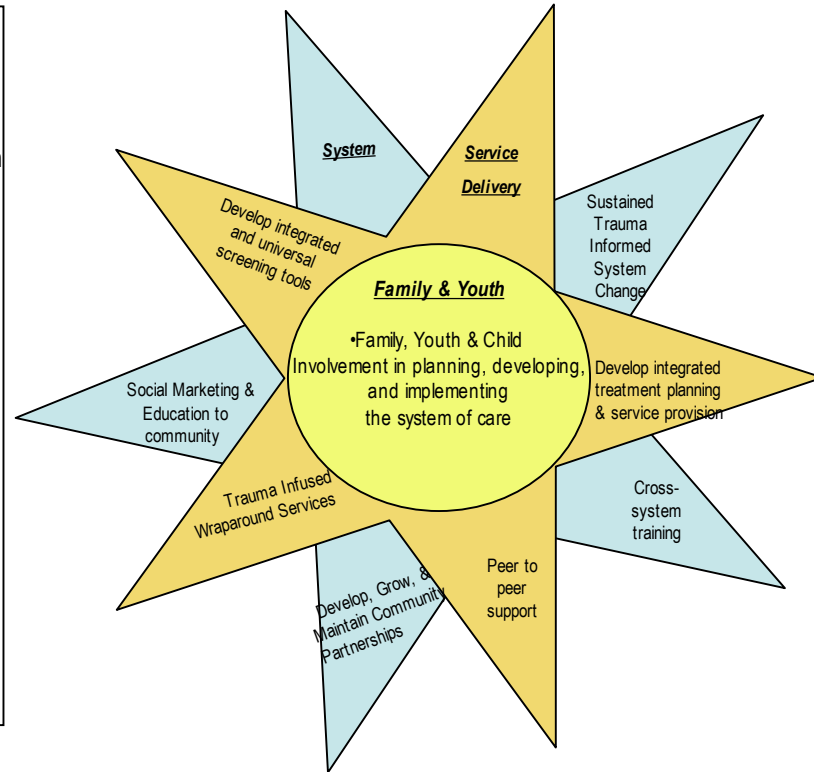
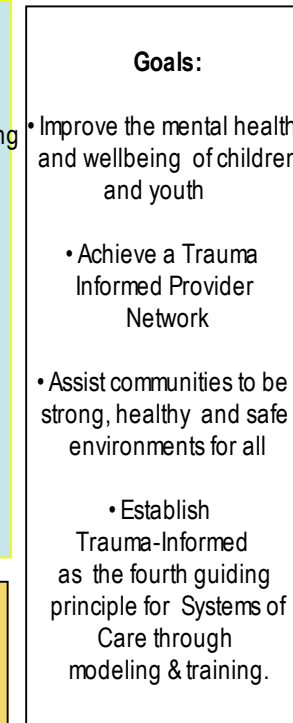
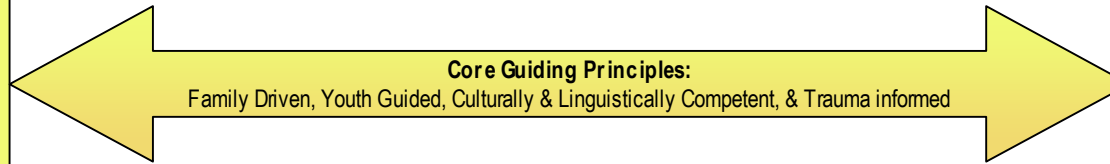
What are the strengths and needs of our service providers?

Issues/Needs

- Effective Trauma services & treatment
- Improved provider collaboration
- Inclusion of natural supports in treatment

Strengths

- Initial trauma informed training for some providers
- Initial training and utilization of Evidence Based treatment
- Most providers have received training in child family centered planning



Thrive Short Term & Long term Outcomes

Short Term Outcomes (12-24 months)

Family, Youth, and Child

- ☀ Families and youth enrolled in SOC will experience increased participation and engagement in services planning process
- ☀ Children and families of all cultures participate in the development and implementation of the local System of Care
- ☀ Children and Family provided with education and training in advocacy and leadership

System/Infrastructure

- ☀ Increased knowledge of trauma identification, effects and resources.
- ☀ Planning & development of resources
- ☀ Develop SOC communication networks
- ☀ Development of Trauma Informed curriculum
- ☀ Identify family and youth for participation and involvement in planning SOC
- ☀ All partners in SOC participate in the development of single point and barrier free access to care
- ☀ Provider system recognizes it's organizational/cultural differences
- ☀ Identify gaps in diversity in the workforce

Service Delivery/Practice

- ☀ Direct Care providers trained and supported in the use of trauma specific services
- ☀ Identify how cultures interact with service delivery
- ☀ Identify how trauma interacts with service delivery
- ☀ Ensure all providers are aware of ways to include natural supports in treatment planning
- ☀ Providers are trained on family/youth driven planning
- ☀ Service Delivery model employs a family/youth partner to assist in navigating system

Long Term Outcomes (3-5 years)

Family, Youth, and Child

- ☀ Youth and family enrolled in SOC will report satisfaction with services and service delivery process
- ☀ Child/ youth trauma survivors enrolled in SOC experience fewer trauma related symptoms and exposure to traumatic events is minimized
- ☀ Families and youth will experience increased family stability and improved relationships
- ☀ Children/youth enrolled in SOC will experience reduction in use of restrictive out of home placements and experience shorter lengths of stay in these placements
- ☀ Family and youth will effectively self advocate

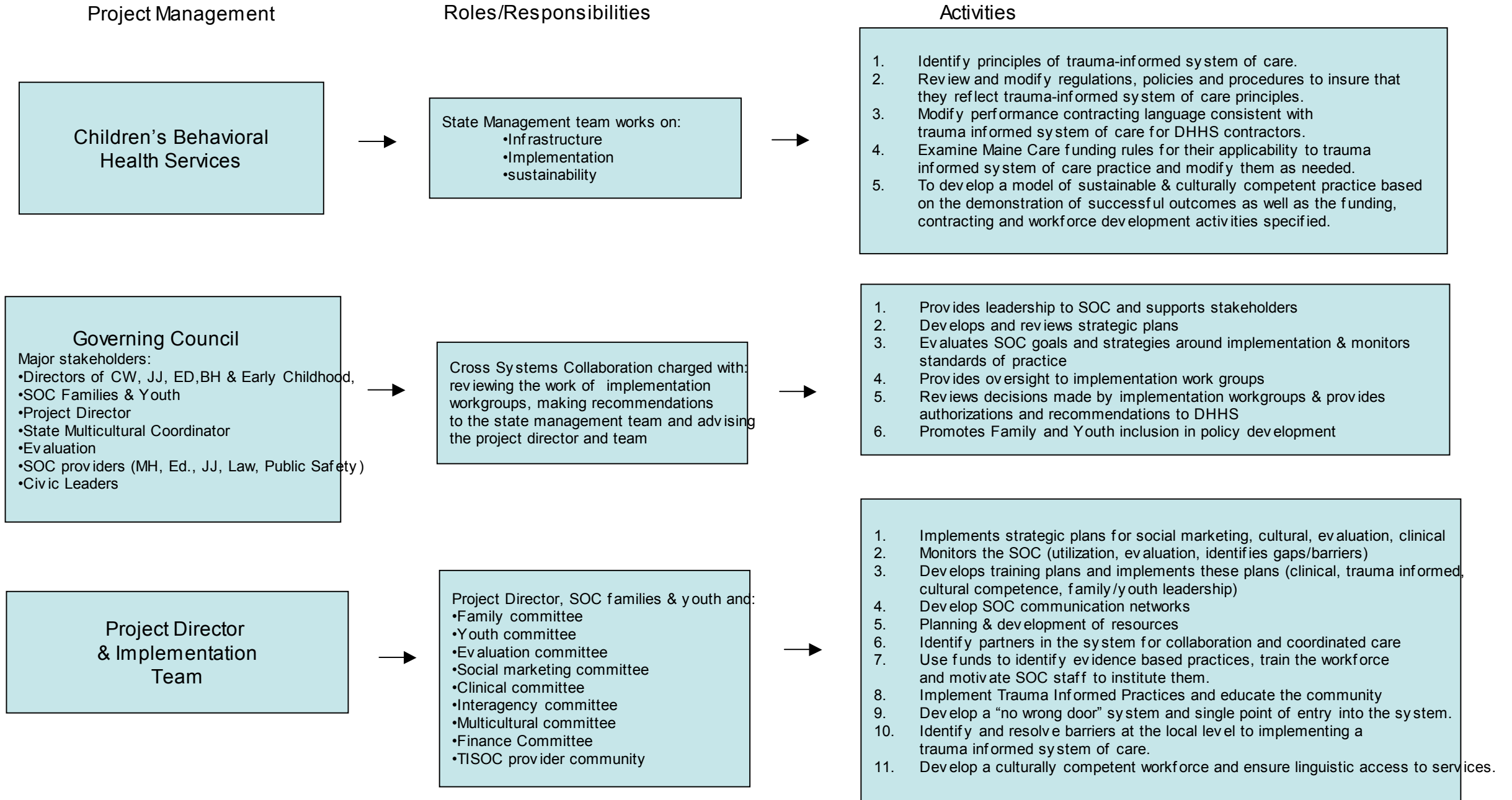
System/Infrastructure

- ☀ System wide identification of trauma
- ☀ System wide adoption of Trauma Identification practices
- ☀ System wide sustainability of resources
- ☀ Increased collaborative efforts and a communication process
- ☀ SOC is trained in Trauma Informed practices
- ☀ SOC policies reflect family and youth ideas and values
- ☀ Youth movement is diverse, self sustaining and state wide
- ☀ Family Organizations will reflect system of care values and be Trauma Informed
- ☀ There is a system wide single point and barrier free access to care
- ☀ Provider system demonstrates it's awareness of organizational/cultural differences by improved collaboration
- ☀ Demonstrate a diverse work force
- ☀ Capacity has been enhanced to address access issues for families and provide more service options

Service Delivery/Practice

- ☀ Increased trauma identification for children and family
- ☀ Providers are culturally competent and trauma informed
- ☀ Services are trauma informed
- ☀ Natural supports are included in every child, youth and family plan
- ☀ Service delivery plans are youth and family informed
- ☀ Services offer peer to peer support at entry and throughout provision of services

Trauma-Informed System of Care Governance Structure



Drill Down Glossary

Logic Model:

- Helps you to see systems (example: Child Welfare) and programs (example: parent skill training) and what they need to work
- Website info: www.wkkf.org (Kellogg foundation) and <http://logicmodel.fmhi.usf.edu/index.htm#>

Mission Statement:

- “What is it all about?” “This is our motto.” Describes the overall purpose of the organization or program
- “What’s so special about this system?” Tells you what is unique about the system.

Vision Statement:

- “Wouldn’t it be nice if....” Compelling description of what the system will look like once it has achieved it’s goals.

Goals:

- Statements that describe what change will look like.

Outcomes:

- What success will look like. The cold hard facts. (example: Child attends school 27 out of 30 days)

Guiding Principles:

- The most important part! We build the house on a foundation and these principles are the foundation. Without this foundation the house would sink in the dirt!

Service Delivery:

- What services will look like and strategies to improve services

System Infrastructure

- Some strategies to improve the larger system

Family Driven

- [Link to definition](#)

Youth Guided

- [Link to definition](#)

Culturally and Linguistically Competent

- [Link to definition](#)

Peer to Peer Support:

- Receive support and assistance from someone who has first hand experience with mental health services
- Family Resource Specialist in the Wraparound System and the System of Care
- Youth advocate from a youth consultant pool
- Family Organizations

Cross System Training:

- Train all service partners even if they are from different systems so that they can better collaborate with each other and serve families and youth. (examples: a local school, a mental health agency, a pediatrician)
- Provide trainings on treatments that work
- Provide trainings on trauma, cultural issues, family and youth issues

Social Marketing & Education

- Tell the community about services
- Help folks better understand mental health & trauma
- Let's us hear what you think about services!
- Hear what we are up to.

Wraparound Services:

- It's a family centered, community oriented, strength based way of solving problems. A primary objective is to help families, children and youth remain in their homes and communities whenever possible.
- This guide from the National **Wraparound** Initiative (NWI) provides an introduction to **wraparound** services www.rtc.pdx.edu/nwi

Integrated Universal Screening Tools:

- Tired of being asked the same questions over and over again by different providers using different forms? Well that's what the idea is behind one assessment tool that works for most providers.

Develop Integrated Treatment Planning & Service Provision

- Do you have more than one provider? Wouldn't it be nice if they all talked to each other and shared the same plan of care that works for you and your family? That's what this is all about.

Interagency Governing Council

- A group of leaders which includes family, youth, providers, state agencies, medical providers, cultural brokers.... This group helps guide the change process.
- Click on a link that takes you to a list of members

Local Implementation Team

- Go to link of “Meet your team”
- Committees, go to link of “Committees”

Continuous Quality Improvement

- We want to keep getting better and we want to know that things are working. This is a way of asking those questions and getting the information we need to make sure that this is happening.