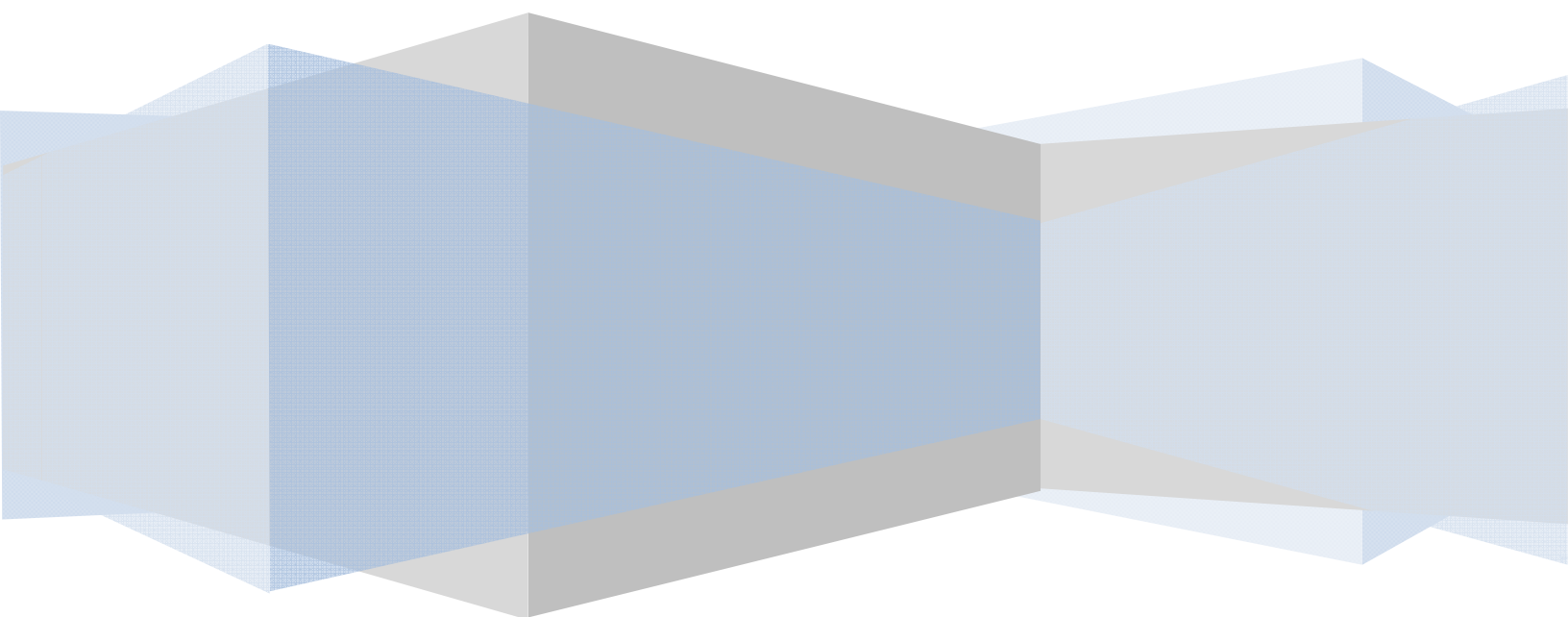


Trauma Informed Care Workgroup
October 14, 2010

Creating Trauma Informed Care Environments Organizational Self Assessment

Survey Monkey Results

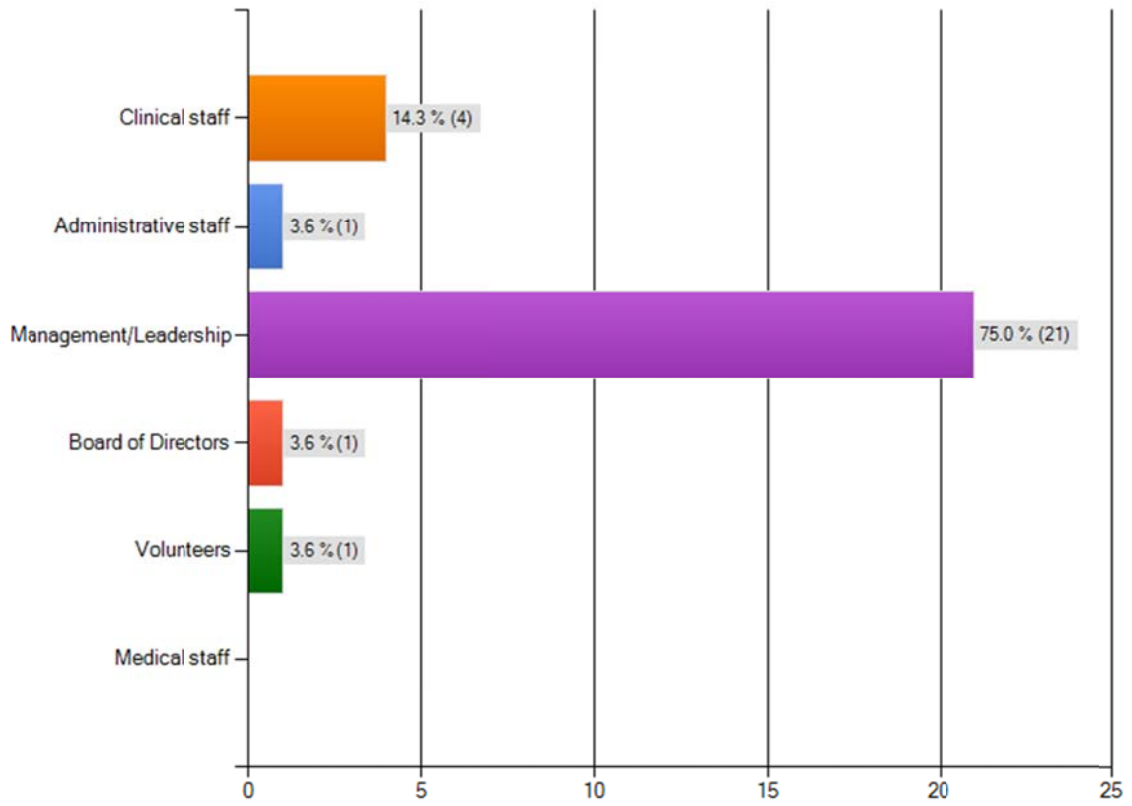
Clara Reynolds



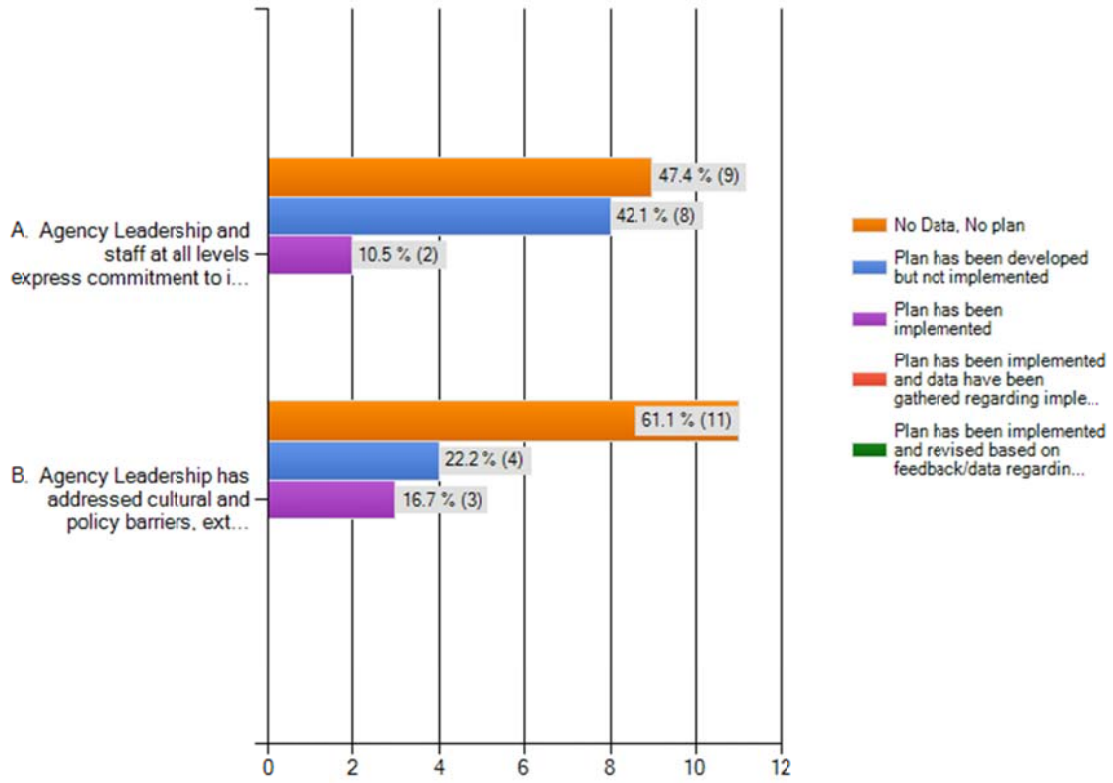
Agency that completed the survey

1.	Success 4 Kids and Families	Fri, Oct 8, 2010 11:10 AM
2.	Success 4 Kids & Families Healthy Start Program	Thu, Oct 7, 2010 3:55 PM
3.	Success 4 Kids and Families	Thu, Oct 7, 2010 12:22 PM
4.	Hillsborough Kids, Inc.	Mon, Oct 4, 2010 9:14 PM
5.	DACCO, Inc.	Mon, Oct 4, 2010 5:24 PM
6.	BayCare Behavioral Health	Fri, Oct 1, 2010 3:09 PM
7.	Mental Health Care, Inc.	Mon, Sep 27, 2010 6:42 PM
8.	Children's Home Society/Hillsborough Kids Inc.	Mon, Sep 27, 2010 11:49 AM
9.	Volunteers of America	Mon, Sep 27, 2010 10:26 AM
10.	MHC, Inc- Family Resource Centers (Outpatient)	Mon, Sep 27, 2010 8:33 AM
11.	Children's Home Society, FL	Sat, Sep 25, 2010 5:09 PM
12.	Mental Health Care, Inc.	Fri, Sep 24, 2010 2:33 PM
13.	Children's Home Society/ Hillsborough Kids	Fri, Sep 24, 2010 2:02 PM
14.	CHS case management	Fri, Sep 24, 2010 11:50 AM
15.	Mental Health Care, Inc.	Thu, Sep 23, 2010 3:19 PM
16.	hki	Thu, Sep 23, 2010 2:44 PM
17.	xxx	Thu, Sep 23, 2010 2:06 PM
18.	g	Thu, Sep 23, 2010 2:05 PM
19.	Mental Health Care, Inc	Thu, Sep 23, 2010 1:38 PM
20.	Hillsborough Kids/Children's Home Society	Thu, Sep 23, 2010 1:33 PM
21.	Mental Health Care, Inc	Thu, Sep 23, 2010 1:20 PM
22.	Mental Health Care, Inc	Thu, Sep 23, 2010 1:18 PM
23.	Department of Veterans Affairs Psychosocial Rehabilitation & Recovery Ctr	Thu, Sep 23, 2010 12:49 PM
24.	DCF Adult Services	Thu, Sep 23, 2010 11:22 AM
25.	fffff	Thu, Sep 23, 2010 9:36 AM
26.	DCF	Thu, Sep 23, 2010 9:15 AM
27.	James A Haley VAMC - Psychosocial Rehabilitation & Recovery Center Tampa, FL	Thu, Sep 23, 2010 7:48 AM
28.	NAMI Hillsborough	

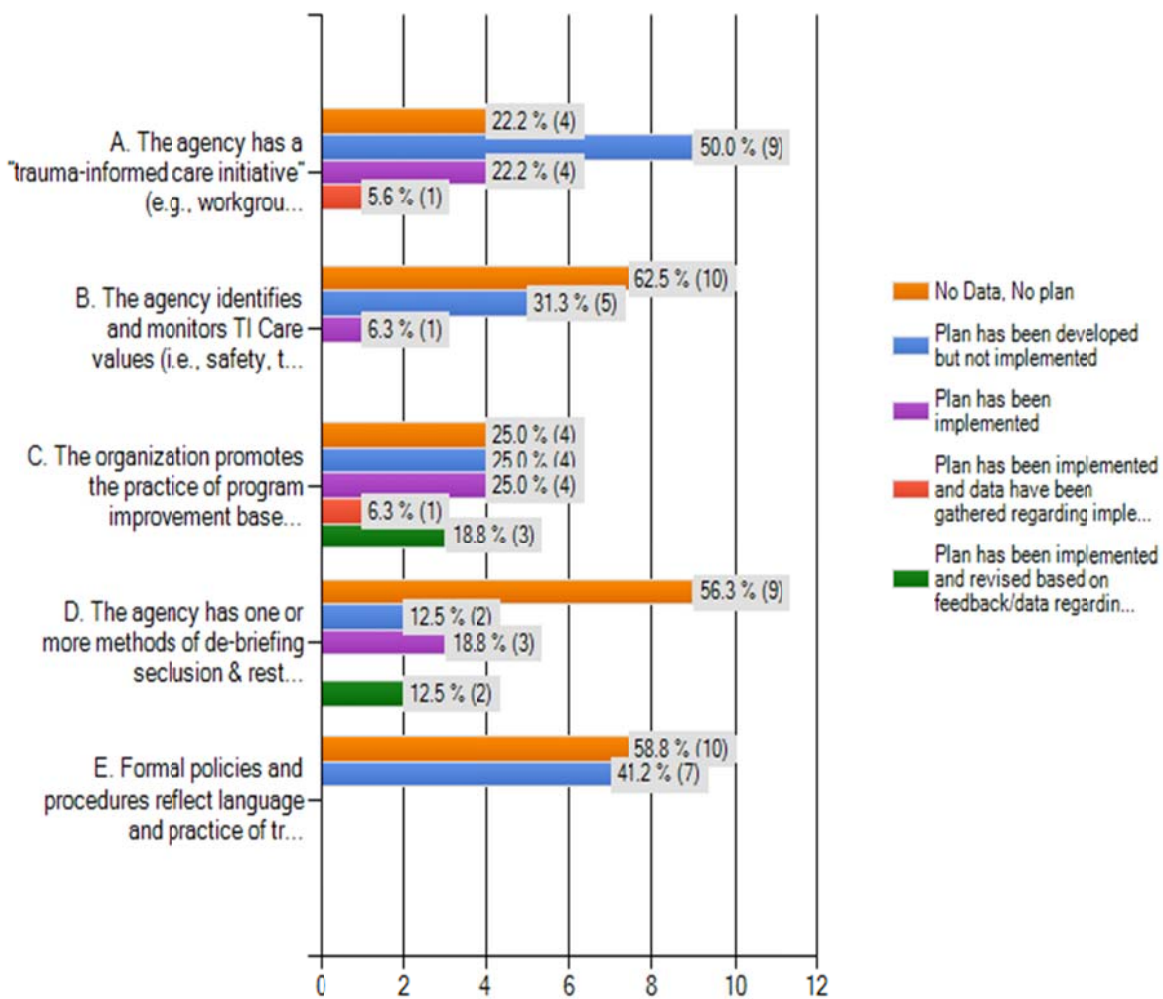
Please indicate your position:



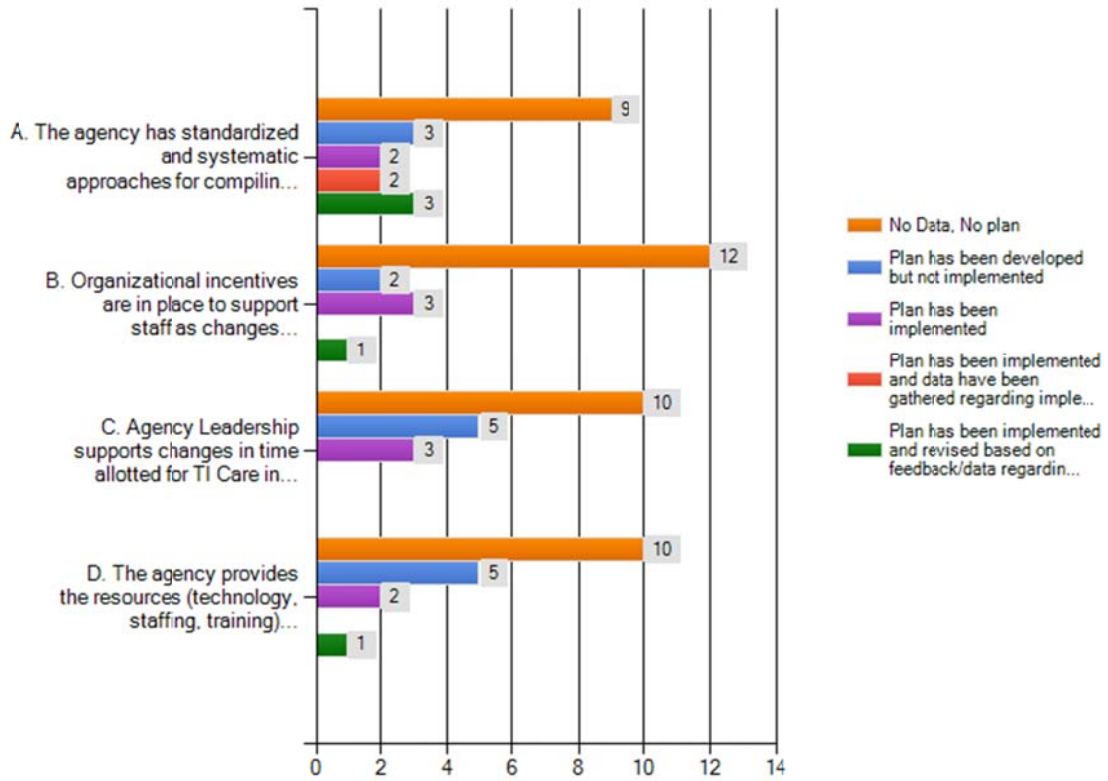
Demonstrate a minimum threshold of organizational readiness and build the capacity to implement a new practice model.



Demonstrate organizational practice standards for implementation of trauma-informed care.



Provide support and infrastructure to monitor and evaluate practices and outcomes on an ongoing and continuous basis.



Demonstrate program practice standards for implementation of trauma-informed care.

						answered question	18
						skipped question	10
	No Data, No plan	Plan has been developed but not implemented	Plan has been implemented	Plan has been implemented and data have been gathered regarding implementation	Plan has been implemented and revised based on feedback/data regarding implementation	Rating Average	Response Count
A. Clinical and milieu staff is integrated into treatment teams that allow for integrated training and supervision.	41.2% (7)	29.4% (5)	17.6% (3)	5.9% (1)	5.9% (1)	1.06	17
B. There are opportunities for staff to recognize, acknowledge, and address their vicarious traumatization.	52.9% (9)	29.4% (5)	17.6% (3)	0.0% (0)	0.0% (0)	0.65	17
C. The program offers trauma-specific, evidenced-based practices.	52.9% (9)	35.3% (6)	5.9% (1)	5.9% (1)	0.0% (0)	0.65	17
D. Treatment planning and interventions are individualized, and developmentally suited to each youth.	35.3% (6)	11.8% (2)	29.4% (5)	0.0% (0)	23.5% (4)	1.65	17
E. Each youth has a safety or crisis management plan with individualized choices for calming and de-escalation.	43.8% (7)	18.8% (3)	18.8% (3)	0.0% (0)	18.8% (3)	1.31	16

Demonstrate program practice standards for implementation of trauma-informed care.

<p>F. The physical environment is attuned to safety, calming, and de-escalation.</p>	<p>50.0% (8)</p>	<p>12.5% (2)</p>	<p>18.8% (3)</p>	<p>0.0% (0)</p>	<p>18.8% (3)</p>	<p>1.25</p>	<p>16</p>
<p>G. Milieu staff uses a strengths-based, person-centered approach in all their interactions with youth.</p>	<p>37.5% (6)</p>	<p>12.5% (2)</p>	<p>18.8% (3)</p>	<p>6.3% (1)</p>	<p>25.0% (4)</p>	<p>1.69</p>	<p>16</p>
<p>H. Staff has systematic opportunities to seek support, or assistance from their peers.</p>	<p>31.3% (5)</p>	<p>18.8% (3)</p>	<p>25.0% (4)</p>	<p>6.3% (1)</p>	<p>18.8% (3)</p>	<p>1.63</p>	<p>16</p>

Youth and families are empowered to take an active role in the organization.

